

Happy 24th Birthday IntelliTrac

It was the 21st of July 1987 in Melbourne Australia, that the first small steps toward a fantastic journey were taken. Twelve months later almost to the day a huge leap was taken when our founder decided to exhibit at the Singapore International Motor Show, which launched the company on an international scale.



It has been a fast paced journey since then. We have seen many advancements in technology, experienced the recession we had to have (in the late 80's/early 90's) and the GFC. We became part of the internet "dotcom" revolution and then morphed into the fast paced GPS tracking and connectivity solutions arena.



Along our journey we have developed many relationships, in many countries and many industries, with some wonderful people that have become our closest personal friends and colleagues.

We have seen many staff come and go, but overall our staff have held our client's interest in high regard and done their best to

provide excellent customer service, even when resources were stretched to their limits. The "sometimes" frequent overnight stints to get projects out on time, or to get those orders on the plane by 4am, highlight dedication of our teams.

We like to call it the IntelliTrac family, whereby all our staff are considered our family. We all look out for each other just like a real family. We sometimes argue, get frustrated with each other, but in the end it's all about what's best for our business and our customers. I suppose that is one of the advantages of being a part of a family owned business. The culture is in our DNA and will that never change. Our philosophy then and now is to bring to our customers, leading edge products and solutions that are, reliable, and affordable, and provide real benefits, all backed by excellent customer service and support



We invite you to visit our Facebook page and relive the last 24 years, You will get to see the faces behind the names and most of all witness our fantastic journey.



CEO Desk

It's our 24th Birthday! Wow what a journey it has been!

Reflecting upon the past, brings to mind the 80's when affordable personal computer technology was maturing but businesses were still reluctant to adopt this new technology.

Could you imagine a business today that still did manual bookkeeping, had a typing pool, and used snail mail?

Remember those days when computers made mistakes?

"There is no way we are bringing computers into our business, because I cannot trust them! I would rather do the bookkeeping & client records manually."

Organisations that continued to adopt these attitudes became non competitive dinosaurs and were soon extinct.

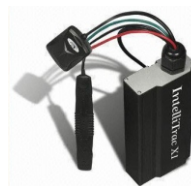
GPS tracking is now a mature and affordable technology. It is a business tool which when used correctly helps improve efficiency and productivity, translating to increased profits and business growth.

Businesses which fail to adopt GPS Technology may just become non competitive dinosaurs, just like their predecessors in the late 80's

Dean Calapai CEO

MyCars @ \$199

To celebrate our 24 years of successful business, we are offering MyCars GPS for only \$199. Offer ends 31 August or until allocated stocks are sold out.



- Real Time Internet Tracking
- Journey Replay on Map
- Fleet Activity Reports
- Customer Service Level & Fleet Utilisation Report
- Driver Report - Fatigue Management
- Vehicle Service Pending & Due Reports & Alerts
- Exception Reporting with Email Real Time Alerts
- 2 year warranty, 2 year fixed low monthly fees
- No contracts!

Refer to our website for full conditions

IntelliTrac Plug&Go @ \$99

IntelliTrac's X1 Plug And Go is an entry level device suitable for general vehicle tracking and fleet management applications where portability between vehicles is a mandatory requirement.

X1 Plug And Go provides constant real time tracking over the internet, with positions being sent every 3 minutes.

Suited for businesses employing contract or "fill in" owner drivers, IntelliTrac Plug & Go requires NO Installation and quickly allows business to accurately monitor and pay contracted rates on distance travelled and time worked.



Hand Them
Out To Your
Contractors/
Owner Drivers
**Normally
\$299**

- ☑ Plug into the Cigarette Lighter & sit it on the dash
- ☑ Real Time Internet Tracking
- ☑ Journey Replay on Map
- ☑ Fleet Activity Reports
- ☑ Exception Reporting with Email Real Time Alerts
- ☑ 2 year warranty, 2 year fixed low monthly fees
- ☑ No contracts!

New Staff @ IntelliTrac

We would like to welcome the following new staff to IntelliTrac:-

Marcel Musco - Accounts
Pino D'Aversa - Engineer/Support Specialist
Fabian Toperoso - Electronics Technician/Installations
Mehmet Altuntas - Software Development

A big welcome aboard!

New Features

As part of our journey of continuous and never ending improvement, the following new features are now available:-

Address Search - The new toolbar allows you to search an address and determine the closest vehicles to the address.

Time & Day Restrictions - A new feature to limit access to GPS tracking information to only business hours. A feature being requested by more and more corporate clients as part of employee privacy agreements.

My Service Manager - A proactive tool to alert you by a pop up window and email when vehicles or plant and equipment are due for servicing based on Odometer or Hour Meter readings.

Carbon Foot Print Calculator IntelliTrac has introduced a Co2 emissions report into its product range. Quickly calculate the carbon foot print of your fleet.

Exception Alerting - A complex and powerful module with many uses from monitoring simple SOS duress alerts to monitoring service level agreements you may have in place with your customers.

